



Come along on Monday 19th December for:

Big Onion AGM 6-7pm Eagle and Child, upstairs.

SENS Energy sub group meeting 7pm Eagle and Child (to look at LEAF community energy bid)

SENS Social **Note change of date** 7.30pm Eagle and Child

SENS AGM Monday 16th January – we will be looking for a new Chair and officers, although some may wish to stand again.

SENS wins Award

SENS/Big Onion was recently awarded The Green Award in the 2011 Pride of Lakeland Awards. The award recognised the extra special contribution made by a person or organisation to impact the environment within their community. Nicola, Fran and Sue attended a glitzy awards ceremony at the Castle Green Hotel!



Big Onion pilot project achievements

The Big Onion ran this year from March 2011 – October 2011. After a very successful Pancake event at Easter, the Big Onion started on Sundays selling local veg from Raymond at Crook, Growing Well at Sizergh and Mark at Sunny Orchard Farm, Staveley. Here is a list of just a few of the achievements, with over 20 people involved as volunteers:

- Staveley Local food map
 - Public planting in the Mill Yard, Abbey, Main St, Forest garden on the Rec.
 - 13 people did talks/skills share's on subjects such as Chickens, Cloches, Damsons, Planting in guttering, Potatoes planting in bags. Wild foods, slug control, composting, whittling wood, Propagation by aerial rooting
 - Sold and used 600 local eggs, inc 200 at Easter
 - Through sales of veg, tea and coffee, cakes etc
- Financially supported:
Growing well. Raymond, Sunny Orchard farm £700
The village hall. £400



Lessons included: Not a lot of food is produced locally. Bad growing year. People grow just enough for self and don't always have a surplus to trade.

Plans for next year are in development! If you'd like to get involved, contact nicolarudge@mac.com

Forest Garden

Volunteers from the Big Onion have started developing a Forest Garden in a corner on the Rec near the sports court. Rubbish has been cleared, a wormery and composter installed and by summer a water butt will be in. Damson trees and blackcurrent and gooseberry bushes are on their way. To get involved, contact Ruth on jennings_ruth@hotmail.com

NEW Noticeboard at the Gowan Stop and Go bus shelter

Look out for a range of notices and information (including posters for SENS, Big O, Car Club etc) on the new noticeboard in the bus shelter. Ideas for possible content to kaycolley@yahoo.co.uk

Apple Day

A few photos from the 2nd Staveley Apple Day! Well done all involved.

Below: Forest Garden site



Changes to FITS and Cumbria Community Renewables Fund

After 18 months of work towards a Cumbria Community Renewables Fund, the first phase of PV projects was about to be launched, when government policy changes on feed-in tariffs (FITS) brought these plans to an abrupt halt. An Industrial & Provident Society has been registered and several large schemes have been identified ready for a launch of a prospectus this month, but this launch has been cancelled indefinitely. We are not the only community to be affected by this shock change to government incentives for the introduction of renewable technology. A review has been promised but this will not look at the particular issues of community projects until January 2012. Until then the Cumbria Community Renewable Fund is on indefinite hold, a very disappointing outcome for those people in SLACC and other Cumbrian organisations who have worked hard to bring about a way of Cumbrian people investing in renewable energy projects in Cumbria. Thank you to those who have expressed an interest in this project and the small group of volunteers, who have worked to bring the community project to fruition. We will keep you informed of any changes that may allow us to continue.

LEAF Funding for community energy projects

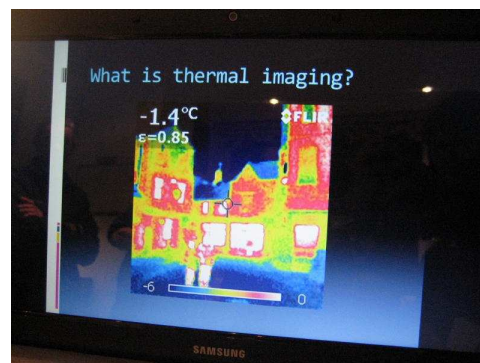
SENS are looking at possibly putting in a bid to DECC for funding to look at how householders can benefit from the new Green Deal (finance for energy efficiency measures) and possibly a demonstration project. Deadlines are tight but if you are interested in getting involved in developing the project contact Ruth jennings_Ruth@hotmail.com

Report from thermal imaging

8 people went along to learn about thermal imaging at a recent SENS event at 2 houses in Danes Rd. We were shown how to search out common areas of heat loss in the buildings, for example damp areas in walls, heat escaping around window frames, uninsulated loft hatches, unlagged pipes etc.

Many thanks to Diane from Green Footsteps for running this training and Sally and her neighbours for hosting us.

If you are interested in having your home checked with a thermal imaging camera, you can register your interest with Ruth on [warmerhouses@gmail.com](mailto:warmehouses@gmail.com)



SENS is a network of people and organisations in Staveley working on climate change and keen to reduce carbon emissions. **For information about SENS contact** either Fran Richardson (Secretary) 821459, or Alistair Kirkbride (Chair) at 79 Main Street Alistair.kirkbride@btinternet.com or visit www.staveley-gti.co.uk